

**Haasco, Ltd.**

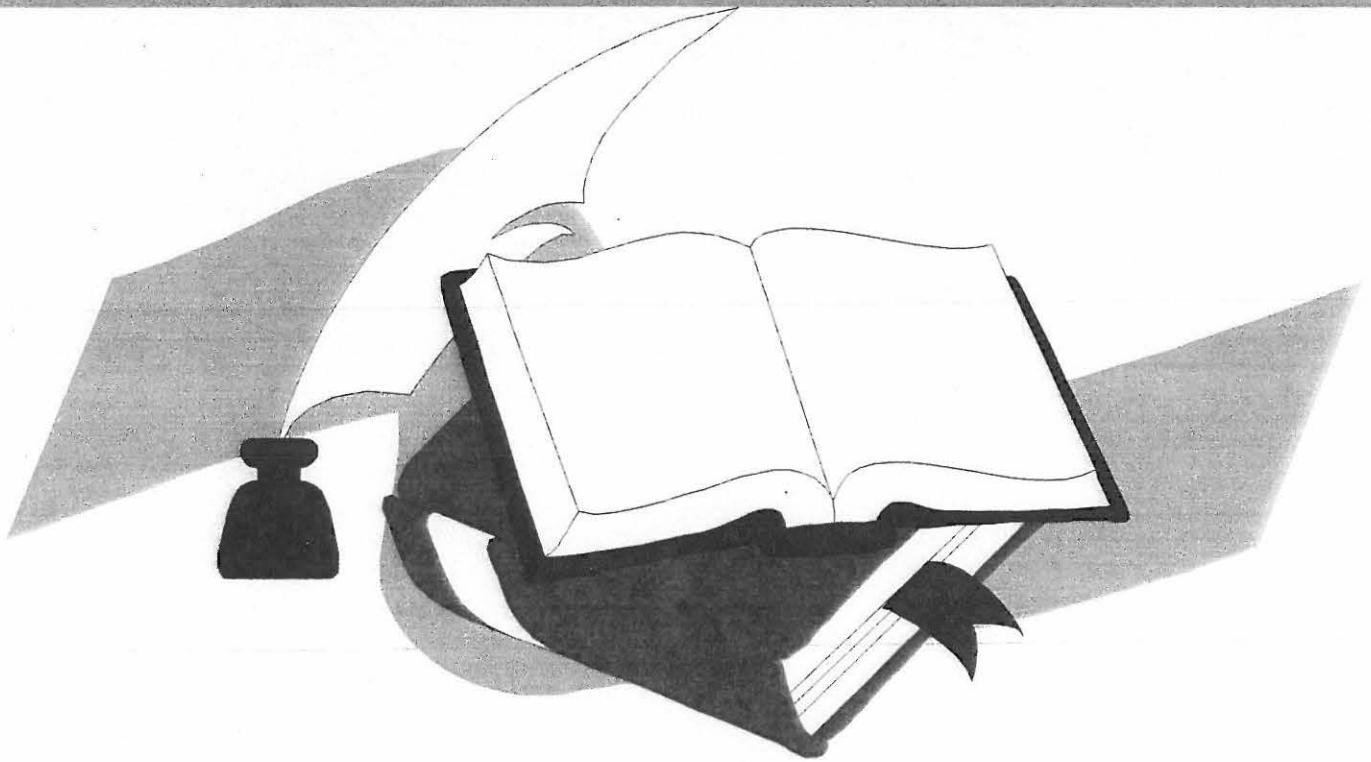
147 First Avenue East

Post Office Box 156

Dyersville, Iowa 52040

562 875-8300

# Independence Community School District



2012 AHERA  
Re- Inspection

# Table of Contents

Introduction	1
Independence Jr. - Sr. High School 514 5 <sup>th</sup> Ave S.E. Independence, Iowa 50644	2
East Elementary School 1103 First Street W. Independence, Iowa 50644	3
West Elementary School 1301 First Street West Independence, Iowa 50644	4
MISC. Locations	5

# Introduction

## Independence Community School District

# **AHERA REINSPECTION**

## **List of Buildings**

### **2) Jr. – Sr. High School**

Science classroom- separate building  
Annex separate building

### **3) East Elementary School**

Storage shed- SE side-40' x 60'-Beige with white- metal  
Old concession stand-20' x 30' at old ball park  
Red portable hip building- 12' x 16'  
Small sheds(2) south side of East Elementary

### **4) West Elementary School**

### **5) Misc. Locations**

Administration Building- none  
Bus Barn by High School and addition  
Shed  
Lean to shed  
Soccer Field by High School  
2 Story broadcast/ storage  
Old restrooms  
Old dug outs (2)  
New football field by West Elementary  
Locker rooms  
Concession- Restrooms- storage  
2 story press box  
Concession stand south side  
24' x 24' storage garage



May 24, 2012

### Designated Person

The attached material is the AHERA Reinspection report for your school district. The reinspection was completed by Thomas E. Haas of Haasco, Ltd., a State of Iowa licensed Asbestos Inspector/Management Planner, license enclosed

Friable materials which are now non-friable as a result of repairs, enclosures, or encapsulation activities are now updated to a non-friable status. Any materials which are friable are listed as such. A physical assessment and a hazardous assessment have been completed for all friable materials.

A list of needed responses has been completed on the enclosed sheets. The starting and completion dates are listed on the individual assessments. All areas of friable materials need initial cleaning prior to response actions.

Any additional information can be found located in the original AHERA Inspection. Asbestos-containing materials that have been abated or analyzed as non asbestos-containing materials prior to this re inspection have been eliminated from this report. This method was used to simplify and clarify the remaining materials for those individuals who need this information. The management program is an on going process which constantly changes and can be updated in this same manner to keep it an accurate picture of the facilities.

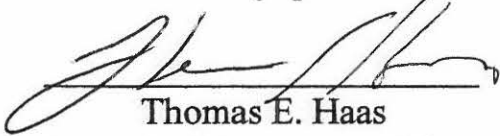
If floor tiles were sampled and analyzed using Polarized Light Microscopy (PLM) and identified as non asbestos-containing on the original inspection, the Environmental Protection Agency (EPA) now recommends retesting the floor tiles using Transmission Electron Microscopy (TEM), which is more accurate.

The Inspector/Management Planner has not reviewed the adequacy of the existing Management Plan, nor has he made any independent judgments of previous inspection reports, sampling protocol or sample analysis other than listed in this Re inspection Report. Any errors and/or omissions in asbestos related work done prior to this Re inspection is strictly the responsibility of the school district. **This re-inspection is based solely on the 2006 Asbestos AHERA Re-Inspection.** No additional information was available.

The school district acknowledges that they are aware of the various asbestos related services provided by Haasco, Ltd., and has considered any possible conflict of interest which might arise, and has acquired services which are in the best interest of the school district. An example of a possible conflict of interest would be Thomas E. Haas, acting as the Management Planner, recommends removal, and then Thomas E. Haas, acting as the Asbestos Removal Contractor, would do the removal.

To comply with AHERA, place a copy of the AHERA Re inspection Report/Management Plan in each administrative offices and a copy in the Superintendent's office.

If there are any questions, feel free to contact our office at your convenience.

A handwritten signature in black ink, appearing to read 'T. Haas', is written over a horizontal line.

Thomas E. Haas

Inspector/Management Planner

State of Iowa #11-8768 I and 11-9022MP

Building	Location Material	Assessment Accessibility	Frequency	Vibration	Damage Amount Distributed/Localized	Classification	Recommendation	Cost
Junior Senior High school	Throughout lower level 1 -20 Thermal system insulation	low	low	low	2-4%	Damage	Repair by Sept 2013 Thermal system insulation is not accessible most located above suspended ceiling tiles	\$1,200.00
East Elementary	Tunnels (4-5)							
	Mudded joints	low	low	low	<10%	Damage	Repair by Sept 2013	\$1,000.00
	Janitor room (23)	low	low	low	<10%	Damage	Repair by Sept 2013	\$100.00
West Elementary	Tunnels(7-8)	low	low	low	<10%	Damage	Repair by Sept 2013	\$700.00
	Throughout SCT 25,26,27,31A,33,34,40,41,43,44,45-52	low	low	low	4-6%	Damage	Repair by Sept 2013 Long term-schedule for abatement Isolated damage throughout	\$1,200.00
Old concession at East	Drywall/ dry wall compound on ceiling	low	low	low	8%	Damage	Test or repair by Sept 2013	\$250.00

ASBESTOS LICENSE NO.: 12-9023W  
12-9555B

EXPIRATION DATE:

NAME: ALVIN HAAS  
ADDRESS: 604 7TH AVE SE  
CITY STATE ZIP: DYERSVILLE IA 52040



ASBESTOS LICENSE NO.: 11-8997S

EXPIRATION DATE: 10/4/2012

NAME: THOMAS HAAS  
ADDRESS: 106 12TH AVE SW  
CITY STATE ZIP: DYERSVILLE IA 52040



ASBESTOS LICENSE NO.: 12-8768T  
12-9023W  
12-9555B

EXPIRATION DATE: 3/2/2012  
3/20/2012  
3/6/2013

NAME: THOMAS HAAS  
ADDRESS: 7 106 12TH AVE W  
CITY STATE ZIP: DYERSVILLE IA 52040



# Designated Person Responsibilities and Information

## Designated Person Responsibilities

- 1) 763.87(d) Ensure that bulk material sample analysis results include the name and address of each laboratory performing an analysis, the date of analysis, the name and signature of the person performing the analysis and that these analysis reports are included in the LEA's Management Plan within thirty (30) days of the analysis,
- 2) 763.88(d) Ensure that persons performing inspections, reinspections, assessments, recommendations and other asbestos related services are accredited and that these are included in the LEA's Management Plan,
- 3) 763.92(b)(2)(iii) Ensure that periodic surveillance reports are included in the LEA's Management Plan,
- 4) 763.93(e)(4) Ensure the LEA's Management Plan contains the LEA's Designated Person's name, address and telephone number along with courses completed, the dates and hours of training taken by that person to carry out the duties,
- 5) 763.93(i) Include in the LEA's Management Plan a true and correct statement, signed by the Designated Person which certifies that the general, local education agency responsibilities, as stipulated by 763.84, have been met or will be met.

## Designated Person Information

Independence Community School Districts Designated Person is Chad O'Brien  
His telephone number is 319 334 7435

Designated Person applicable training records received by the designated person meet the requirements as LEA Designated Person.

I, the Designated Person for the School District certify in this statement that to the best of my knowledge, the LEA responsibilities, as stipulated by 763.84, have been met.

I, the Designated Person for the school district certify that the school district acknowledges that they are aware of the various asbestos related services provided by outside Asbestos Contractors, and has considered any conflict of interest which might arise from the interrelationship between accredited personnel, and has acquired services which are in the best interest of the school district. An example of a possible conflict of interest would be if the outside Asbestos Contractor, acting as the Asbestos Inspector/ Management Planner, recommends removal, and then the same Asbestos Contractor does the asbestos removal.

  
Signature of Designated Person

# AHERA Designated Person Statement

The AHERA Designated person has met (or will meet) the responsibilities below.

Per 40 CFR Part 763 Asbestos-Containing Materials in Schools; Final Rule and Notice; the following is a list of Local Education Agency (LEA) responsibilities:

- 1) 763.84(a) Ensure that the activities of any persons who perform inspections, re inspections, and periodic surveillance develop and update management plans, and develop and implement response actions, including operations and maintenance, are carried out in accordance with Subpart E of this part.
- 2) 763.84(b) Ensure that all custodial and maintenance employees are properly trained as required by this Subpart E and other applicable Federal and/or State regulations (e.g., the Occupational Safety and Health Administration asbestos standard for construction, the EPA worker protection rule, or applicable State regulations).
- 3) 763.84(c) Ensure that workers and building occupants, or their legal guardians, are informed at least once each school year about inspections, response actions, and post-response action activities including periodic re inspections and surveillance activities that are planned or in progress.
- 4) 763.84(d) Ensure that short-term workers (e.g., telephone repair workers, utility workers, or exterminators) who may come in contact with asbestos in a school are provided information regarding the locations of ACBM and suspected ACBM, and/or assumed ACM.
- 5) 763.84(e) Ensure that warning labels are posted in accordance with 763.95.
- 6) 763.84(f) Ensure that management plans are available for inspection and



notification of such availability has been provided as specified in the management plan under 763.93(g).

- 7) 763.84(g)(1) Designate a person to ensure that requirements under this section are properly implemented.
- 8) 763.84(g)(2) Ensure that the Designated Person receives adequate training to perform duties assigned under this section. Such training shall provide, as necessary, basic knowledge of:
  - (i) Health effects of asbestos.
  - (ii) Detection, identification, and assessment of ACM.
  - (iii) Options for controlling ACBM.
  - (iv) Asbestos management programs.
  - (v) Relevant Federal and State regulations concerning asbestos, including those in this Subpart E and those of the Occupational Safety and Health Administration, U.S. Department of Labor, the U.S. Department of Transportation and the U.S. Environmental Protection Agency.
- 9) 763.84(h) Consider
- 10) Whether any conflict of interest may arise from the interrelationship between accredited personnel and whether that should influence the selection of accredited personnel to perform activities under this subpart.

  
Designated Persons Signature

9-11-12  
Date

# General Building Inspection Observations

The building inspection is conducted by a qualified and State of Iowa licensed Asbestos Inspector. The purpose of a building inspection is to identify existing building materials that are asbestos-containing materials (ACM). If the inspection is conducted in an occupied building, the Inspector is sometimes denied accessibility to all building areas and materials; i.e., the Inspector can not cut through floor coverings or walls, remove quarry tiles, etc. There are many situations where ACM are concealed in wall cavities and other non-accessible areas, such as tunnels, crawl spaces, above ceilings, pipe chases, under various floor coverings, etc. When these situations occur in construction, renovation, and/or demolition, etc., materials in these areas shall be treated as ACM and handled as such by qualified and licensed asbestos personnel. If suspect material is discovered or damaged during the course of activities, the material shall be considered and treated as ACM so no further fiber release will occur. The following are areas that may be inspected.

- 1. Tunnels and Crawl Spaces:** During the inspection process, the Inspector attempts to check tunnels and crawl spaces for ACM and the degree of damage to the materials. In most cases, quantification of ACM in these areas is impossible due to the inaccessibility to these areas. In addition, these areas may fall under: "Confined Space Regulations". Due to the congestion in tunnels and crawl spaces, obtaining an accurate quantification for mudded joints, pipe wrap, etc. is almost impossible. The Inspector will quantify ACM only in accessible tunnels and crawl spaces, and estimate the quantities in the inaccessible areas. Some reasons for inaccessibility are as follows: flooded areas, pipe congestion, asbestos and other debris, electrical hazards, confined spaces, unknown gas emissions, low ceilings, etc.
- 2. Boilers and Thermal System Insulation:** Interior portions of boilers, heaters, storage tanks, etc. are not always accessible. Materials in these areas will be treated as ACM. Areas of concern are packing inside boiler doors and liners. Use extreme care and properly trained personnel when handling these types of materials. Some boilers have insulated metal jackets over fiberglass or ACM. Thermal system insulation can be found in many different forms; i.e., air cell, preformed mag block, millboard, etc. All mudded joints on thermal and domestic water systems, etc. will be considered as ACM. All fiberglass materials are excluded as suspect ACM.
- 3. Debris:** Any area where damaged ACM are found may and usually have debris in the general area of the damaged material. These areas shall be treated with the utmost care even during the inspection and quantification process. The Inspector considers any exposure to this type of material as a health threat.

**4. State of Quantification:** As a general rule, individual rooms or areas of estimation contain inherently more probability of an error than those groups of rooms or areas or an entire building. In other words, the aggregate tends to be more accurate than the sums of the individual parts. Therefore, when designing response actions (measurements, air samples, etc.), attention shall be given to ensure that quantification and proper methods are followed through careful analysis of the site by the project designer and the asbestos abatement contractor.

**5. The Inspector** may take some latitude in the presentation of the Inspection Report. When the Inspector has found floor tiles, linoleum, and/or carpeting listed he/she may or may not have adhesives listed. Adhesives have been known to contain asbestos and therefore, although not mentioned, it may be presumed to be ACM, listed or not. Testing of the adhesive prior to disturbing is recommended. The same is true for adhesives or mastics used to adhere linoleum to floors or counter tops. All troweled-on and/or sprayed-on surfacing materials; i.e., floor mastics, wall and ceiling surfacings, etc. are either suspected or presumed ACM unless sampled and analyzed to indicate that they are not ACM.

**6. In the Inspection Report,** certain items such as mudded joints (MJ) or metal doors (MD), etc. are listed as units or number of units; i.e. 10 MJ, 3 Damaged, which is an indication of count rather than square feet or linear feet. Most materials listed in the assessment are either listed as square feet or linear feet with these noted exceptions.

**7. In the Assessment Process,** there are additional codes such as ME and MG; ME representing miscellaneous electrical and MG representing miscellaneous gasket materials. Both of these codes are used to indicate materials that are unusual to the normal course of an assessment of the building. Miscellaneous electrical materials include old electrical wiring, switch boards, transite panels, etc. Miscellaneous gasket materials can be found between (thermal) valves, on boiler doors, between fittings, between molds, etc. These codes give the Inspector the ability to qualify materials which sometimes may not be considered as ACM.

**8. A Code Sheet** is included with the Inspector's inspection and assessment report which informs the client as to the Homogeneous Codes that were used during the inspection and assessment process.

**9. All Black Table Tops** and counters are considered to contain asbestos unless they are wood.

# ASBESTOS CODES

A = Assumed	MJ = Mudded Joint
ADH = Adhesive	NC = Nose Cap
APW = Air Cell Pipe Wrap	NF = Non Friable
BP = Boiler Plaster	P or PH = Previous History
C = Ceiling	PP = Patched Plaster/Drywall
CAPS = Stair Treads	PSA = Sand Plaster
CQ = Can't Quantify	PSM = Smooth Plaster
CT = Ceiling Tiles	S = Sample/Samples/Sampled
CT/12 = 12" Ceiling Tiles	SCT = Suspended Ceiling Tiles
DAM. = Damaged	SR = Sample Result
DEB. = Debris	ST = Storage Tank
F = Friable	SU = Surfacing
FE = Furnace Exhaust	T = Thermal
FT = Floor Tiles	Thermal Pipe Measurement = Linear Feet
GASK = Gaskets	TR = Transite
GYM = Gypsum	TSI = Thermal System Insulation
HOMO = Homogeneous	VC = Vibration Cloth
LINO = Linoleum	VDW = Vinyl Covered Drywall
M = Miscellaneous Non Friable	W = Walls
MAC = Metal Asbestos Chimney	WD = Wood Door
MATL. DESC. = Material	N = North
Description	S = South
MD = Metal Door	E = East
ME = Miscellaneous Electrical	W = West
MF = Miscellaneous Friable	

1. All Metal Doors are listed by quantities, example 3 = 3 metal doors.
2. All Mudded Joints are listed by quantities of MJ, not sizes.
3. All Pipe Wrap materials are listed in linear feet.
4. All other measurements are square feet unless stated elsewhere.
5. Sample Results: N = Not Considered Asbestos Containing Material  
Y = Considered Asbestos Containing Material  
N/A = Not Analyzed  
<1% = Contains less than 1% Asbestos Containing Material  
>1% = Contains more than 1% Asbestos Containing Material
6. All Adhesives are considered Asbestos Containing Material which can't be quantified - Non Friable ACM.
7. All Seals and Gaskets are considered Asbestos Containing Material which can't be quantified - Non Friable ACM.

Independence Jr. - Sr. High  
School

Independence Community  
School District

## **THREE YEAR REINSPECTION**

LOCAL EDUCATION AGENCY: Independence Community school District

FACILITY/BUILDING SITE: Independence Jr. – Sr. High School

INSPECTOR/MANAGEMENT PLANNER: Thomas E. Haas

REINSPECTION DATE: May 24 –May 30, 2012

REASSESSMENT DATE: May 24 – May 30, 2012

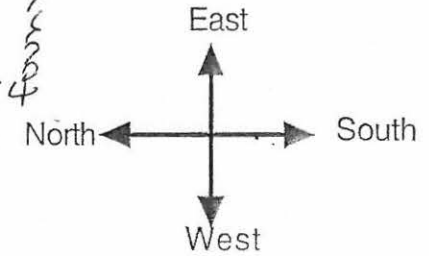
In accordance with the requirements of the Asbestos Hazard Emergency Response Act (AHERA), asbestos containing building materials and suspected asbestos containing building materials that were identified during the initial inspection have been reinspected, reassessed, and appropriate response actions have been determined.

The existing management plan has been updated to reflect any changes.

Note(s): The 2012 -2013 school year is the last year this building will be used as a school. A new one is presently being built.

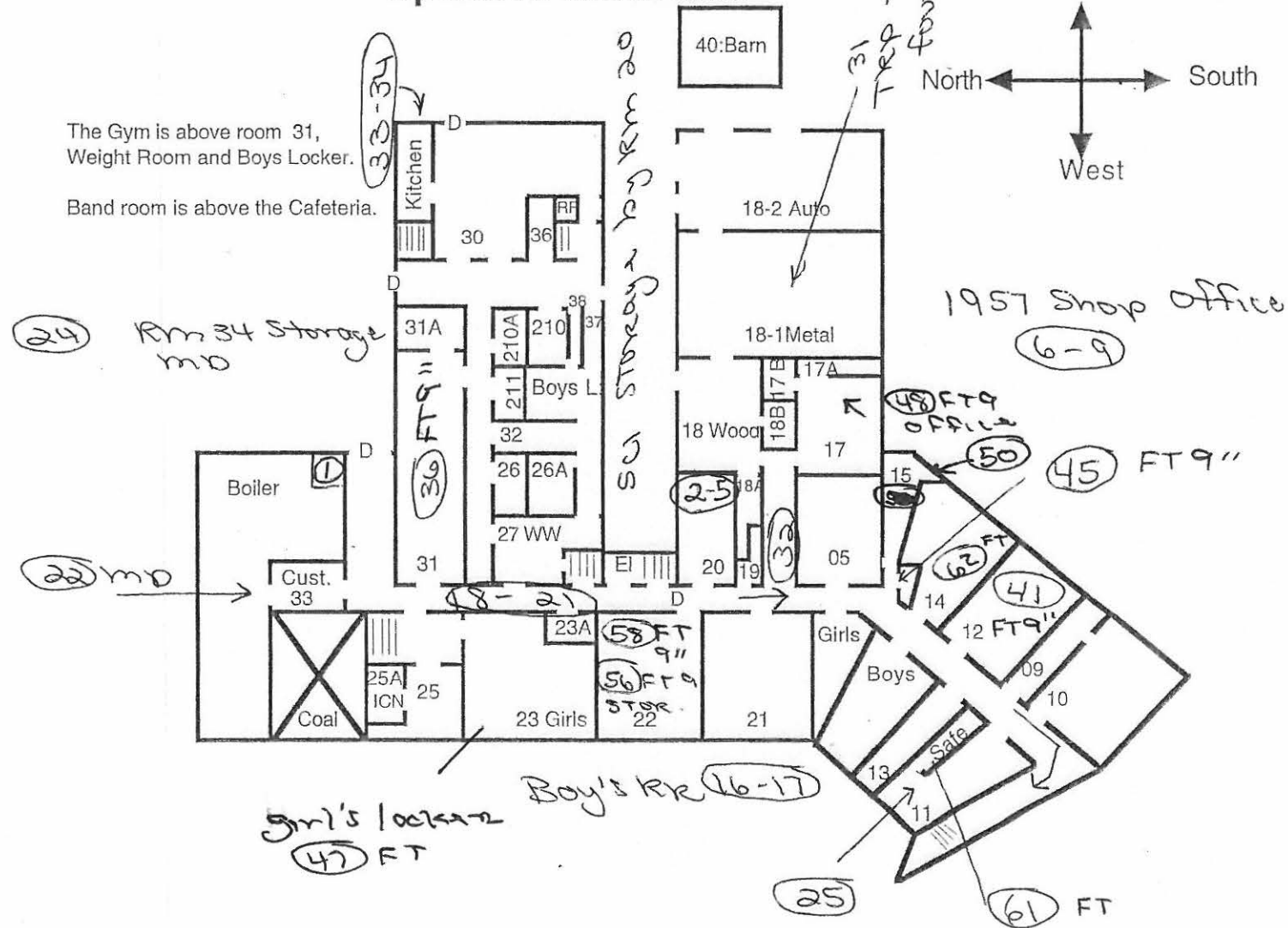
**All floor tiles 9" , 12" should be tested prior to any abatement.**

# 2010-2011 Jr./Sr. High School: Lower Floor Updated 9/23/2010

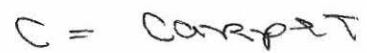


The Gym is above room 31,  
Weight Room and Boys Locker.

Band room is above the Cafeteria.







FT9  $\downarrow$  C

111 is 2 Rms



# INSPECTION FORM

# Independence Community School District

Address:

Inspector: Thomas E. Haas

MATL. DESC. = Material Description, HOMO UNIT = Homogeneous Unit (HOMO UNIT = A system or part of a system containing ACM as: T = Thermal, S = Surfacing, M = Miscellaneous), Area = Quantity/Count, DAM = Damaged, A = Assumed, S = Sampled, SR = Sample Result, F = Friable, NF = Non Friable, MISC = Miscellaneous, FA = Functional Area where HOMO Units are located. HA = Hazardous Assessment (1 - 7, with 7 being the worst).

[illegible]

**INSPECTION FORM      Independence Community School District**

Facility: Jr – Sr. High School

Address:

Page: 2

Inspector: Thomas E. Haas

MATL. DESC. = Material Description, HOMO UNIT = Homogeneous Unit (HOMO UNIT = A system or part of a system containing ACM as: T = Thermal, S = Surfacing, M = Miscellaneous), Area = Quantity/Count, DAM = Damaged, A = Assumed, S = Sampled, SR = Sample Result, F = Friable, NF = Non Friable, MISC = Miscellaneous, FA = Functional Area where HOMO Units are located. HA = Hazardous Assessment (1 - 7, with 7 being the worst).

[illegible]

## INSPECTION FORM

# Independence Community School District

Facility: Jr. – Sr. High school

Address:

Page: 3

Inspector: Thomas E. Haas

MATL. DESC. = Material Description, HOMO UNIT = Homogeneous Unit (HOMO UNIT = A system or part of a system containing ACM as: T = Thermal, S = Surfacing, M = Miscellaneous), Area = Quantity/Count, DAM = Damaged, A = Assumed, S = Sampled, SR = Sample Result, F = Friable, NF = Non Friable, MISC = Miscellaneous, FA = Functional Area where HOMO Units are located. HA = Hazardous Assessment (1 - 7, with 7 being the worst).

[illegible]

# INSPECTION FORM      Independence Community School District

Facility: Jr. -Sr. High School.

Address:

Page: 4

Inspector: Thomas E. Haas

MATL. DESC. = Material Description, HOMO UNIT = Homogeneous Unit (HOMO UNIT = A system or part of a system containing ACM as: T = Thermal, S = Surfacing, M = Miscellaneous), Area =Quantity/Count, DAM Damaged, A = Assumed, S = Sampled, SR = Sample Result, F = Friable, NF = Non Friable, MISC = Miscellaneous, FA = Functional Area where HOMO Units are located, HA = Hazardous Assessment (1 - 7, with 7 being the worst).

NO.	ROOM	MATL. DESC.	HOMO UNIT	AREA	DAM.	A	S	SR	F	NF	MISC	FA	HA
35	Room 32	FT9"	MISC	1260	0		X	yes		X	Floor tile and adhesive		
36	Room 31	FT9"	MISC	510	0		X	yes		X	Floor tiles and adhesive		
37	Kitchen	FT9"	MISC	600	0		X	yes		X	Floor tiles and adhesive		
38	Nurses area	FT9"	MISC	257	0		X	yes		X	Floor tiles and adhesive		
39	Room 16	FT9"	MISC	432	0		X	yes		X	Floor tiles and adhesive		
40	Teacher's workroom/RR	FT9"	MISC	150	0		X	yes		X	Floor tiles and adhesive		
41	Room 111	FT 9"	MISC	1008	0		X	yes		X	Floor tile and adhesive		
42	Room 12	FT9"	MISC	720	0		X	yes		X	Floor tiles and adhesive		
43	Room 117	FT9"	MISC	912	0		X	yes		X	Floor tiles and adhesive		
44	Computer Room	FT9"	MISC	288	0		X	yes		X	Floor tiles and adhesive		
	35- 44										ADHESIVE ASSUMED		

# INSPECTION FORM      Independence Community School District

Facility: Jr. -Sr. School

Address:

Page: 5

Inspector: Thomas E. Haas

MATL, DESC. = Material Description, HOMO UNIT = Homogeneous Unit (HOMO UNIT = A system or part of a system containing ACM as: T = Thermal, S = Surfacing, M = Miscellaneous), Area = Quantity/Count, DAM = Damaged, A = Assumed, S = Sampled, SR = Sample Result, F = Friable, NF = Non Friable, MISC = Miscellaneous, FA = Functional Area where HOMO Units are located, HA = Hazardous Assessment (1 - 7, with 7 being the worst).

NO.	ROOM	MATL. DESC.	HOMO UNIT	AREA	DAM.	A	S	SR	F	NF	MISC	FA	HA
45	Room 115	FT9	MISC	816	0		x	yes		x	Floor tiles and adhesive		
46	Closet outside 15	FT9	MISC	16	0		x	yes		x	Floor tiles and adhesives		
47	Room 114	FT9	MISC	818	0		x	yes		x	Floor tiles and adhesive		
48	Girl's locker and 24	FT9	MISC	244	0		x	yes		x	Floor tiles and adhesive		
49	Room 17 office	FT9	MISC	140	0		x	yes		x	Floor tiles and adhesive		
50	Room 116	FT9	MISC	768	0		x	yes		x	Floor tiles and adhesive		
51	Room 15 and closet	FT9	MISC	200	0		x	yes		x	Floor tiles and adhesive		
52	Room 110	FT9	MISC	792	0		x	yes		x	Floor tiles and adhesive		
53	Vault	FT9	MISC	40	0		x	yes		x	Floor tiles and adhesive		
54	Office storage	FT9	MISC	20	0		x	yes		x	Floor tiles and adhesive		
45 -54											ADHESIVE ASSUMED		

# INSPECTION FORM

## Independence Community School District

Facility: Jr. - Sr. High school

Address:

Page: 6/ last

Inspector: Thomas E. Haas

MATL. DESC. = Material Description, HOMO UNIT = Homogeneous Unit (HOMO UNIT = A system or part of a system containing ACM as: T = Thermal, S = Surfacing, M = Miscellaneous), Area = Quantity/Count, DAM = Damaged, A = Assumed, S = Sampled, SR = Sample Result, F = Friable, NF = Non Friable, MISC = Miscellaneous, FA = Functional Area where HOMO Units are located. HA = Hazardous Assessment (1 - 7, with 7 being the worst).

[illegible]



# Independence Community School District

Page: Page 7

Inspector: Thomas E. Haas

FA = Functional Area where HOMO Units are located, HA = Hazardous Assessment (1 - 7, with 7 being the worst).

[illegible]

**Independence Community School District  
Old High school**

**Exterior science classrooms SE of high school – 28' x 40'  
Annex- Tan NE of High School 80' x 28'**

**Asbestos Letter of Exclusion**

**As an asbestos inspector, I state that the above buildings were built after October 12, 1988 No Asbestos Containing Building Materials was specified as a building material in any construction document for the building and to the best of my knowledge no Asbestos Containing Building Materials was used as a building material in the building.**

  
**Thomas E. Haas**

**Asbestos Inspector/ Management Planner  
12-8768 I and 12-9022 MP**



East Elementary School  
Independence Community  
School District

## THREE YEAR REINSPECTION

LOCAL EDUCATION AGENCY Independence Community School District

FACILITY/BUILDING SITE: East Elementary

INSPECTOR/MANAGEMENT PLANNER: Thomas E. Haas

REINSPECTION DATE: May 24 – May 30, 2012

REASSESSMENT DATE: March May 24 – May 30, 2012

In accordance with the requirements of the Asbestos Hazard Emergency Response Act (AHERA), asbestos containing building materials and suspected asbestos containing building materials that were identified during the initial inspection have been reinspected, reassessed, and appropriate response actions have been determined.

The existing management plan has been updated to reflect any changes.

Note(s): East Elementary was the former West Elementary School

**All mudded joints throughout the building shall be treated as asbestos containing**  
**All abandoned skylight have assumed asbestos transite panels above the ceilings**

District  
Storage

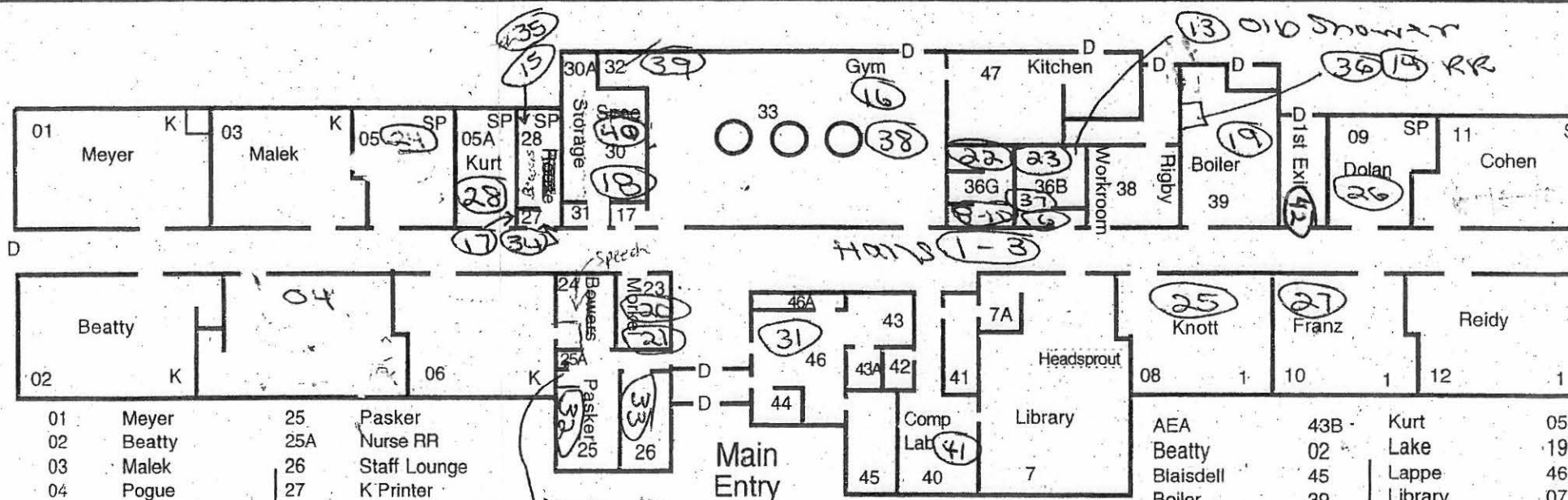
Playground

Updated Room Assignments  
as of 6/30/10

West Elementary  
10-11

"New East"

Key Check



01	Meyer	25	Pasker	05/
02	Beatty	25A	Nurse RR	19
03	Malek	26	Staff Lounge	46
04	Pogue	27	K Printer	07
05	O'Brien	28	Rouse	03
05A	Kurt	30	Storage	31
06	Kress	30B	Speech Storage	01
07	Library	31	Mentoring	21
07A	Olsen	32	PE Storage	23
08	Knott	33	Gym	13
09	Dolan	36B	Boys	44
10	Franz	36G	Girls	25/
11	Cohen	38	Workroom	46/
12	Reidy	39	Boiler	05
13	Music	40	Computer Lab	07/
14	Klima	41	Testing	05
15	Flickenger	42	Small Office	28
16	Goedken	43	Copy	42
17	Hurley, J	43A	Intervention	30/
19	Lake	43B	AEA	26
20	Crawford	44	Nurse	30
21	Miller	45	Blaisdell	41
22B	Boys	46	Lappe	38
22G	Girls	46A	Nurse Supplies	
23	Morkel	47	Kitchen	
24	Bowers			

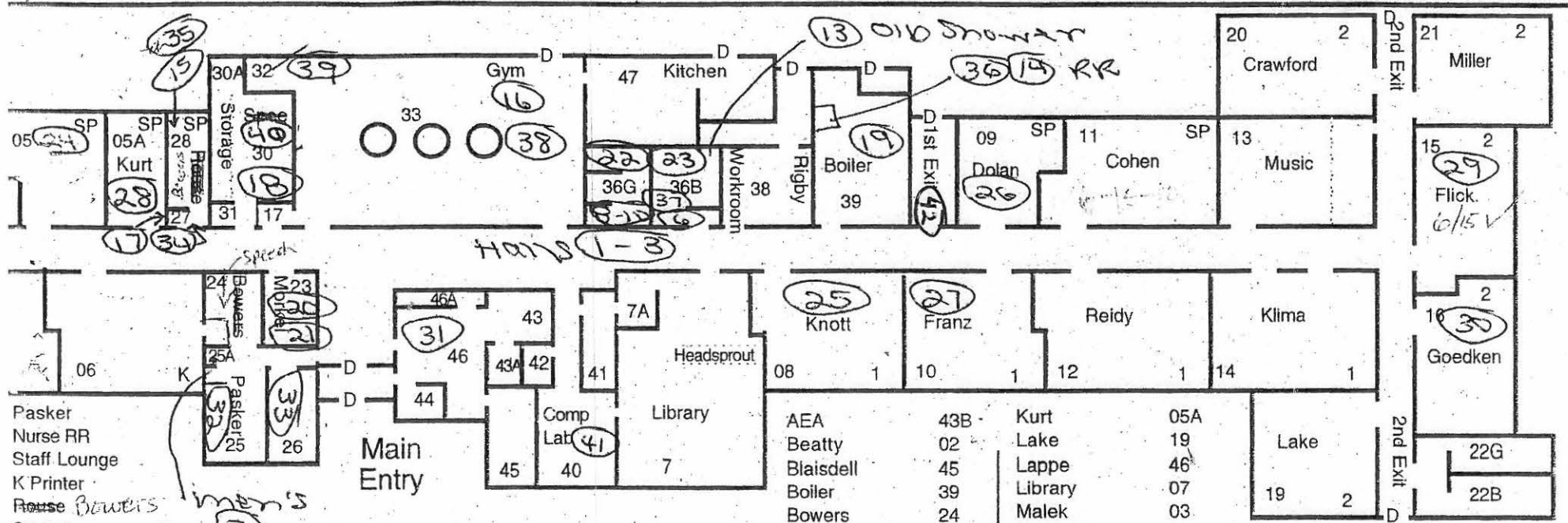
id

Updated Room List  
as of 6/30/10

# West Elementary 10-11

"New East"

Key Check out



- Pasker
- Nurse RR
- Staff Lounge
- K Printer
- Rouse Bowers
- Storage
- Speech Storage
- Mentoring
- PE Storage
- Gym
- Boys
- Girls
- Workroom
- Boiler
- Computer Lab
- Testing
- Small Office
- Copy
- Intervention
- AEA
- Nurse
- Blaisdell
- Lappe
- Nurse Supplies
- Kitchen

Main Entry

Tunnels  
4-5

- |              |     |                |     |
|--------------|-----|----------------|-----|
| AEA          | 43B | Kurt           | 05A |
| Beatty       | 02  | Lake           | 19  |
| Blaisdell    | 45  | Lappe          | 46  |
| Boiler       | 39  | Library        | 07  |
| Bowers       | 24  | Malek          | 03  |
| Boys         | 22B | Mentoring      | 31  |
| Boys         | 36B | Meyer          | 01  |
| Cohen        | 11  | Miller         | 21  |
| Computer Lab | 40  | Morkel         | 23  |
| Copy         | 43  | Music          | 13  |
| Crawford     | 20  | Nurse          | 44  |
| Dolan        | 09  | Nurse RR       | 25A |
| Flickenger   | 15  | Nurse Supplies | 46A |
| Franz        | 10  | O'Brien        | 05  |
| Girls        | 22G | Olsen          | 07A |
| Girls        | 36G | Pasker         | 25  |
| Goedken      | 16  | PE Storage     | 32  |
| Gym          | 33  | Pogue          | 04  |
| Hurley, J    | 17  | Reidy          | 12  |
| Intervention | 43A | Rouse          | 28  |
| K Printer    | 27  | Small Office   | 42  |
| Kitchen      | 47  | Speech         | 30B |
| Klima        | 14  | Staff Lounge   | 26  |
| Knott        | 08  | Storage        | 30  |
| Kress        | 06  | Testing        | 41  |
|              |     | Workroom       | 38  |

2nd Exit

# INSPECTION FORM

## Independence Community School District

Facility: East Elementary

Address:

Page: 1

Inspector: Thomas E. Haas

MATL. DESC. = Material Description, HOMO UNIT = Homogeneous Unit (HOMO UNIT = A system or part of a system containing ACM as: T = Thermal, S = Surfacing, M = Miscellaneous), Area = Quantity/Count, DAM = Damaged, A = Assumed, S = Sampled, SR = Sample Result, F = Friable, NF = Non Friable, MISC = Miscellaneous, FA = Functional Area where HOMO Units are located, HA = Hazardous Assessment (1 - 7, with 7 being the worst).

NO.	ROOM	MATL. DESC.	HOMO UNIT	AREA	DAM.	A	S	SR	F	NF	MISC	FA	HA
1	Hall	MJ	T	8	0		x	yes		x	Mudded joints on water lines		
2		MJ	T	4	0		x	yes			Mudded joints on heating		
3		TRP	MISC	260	0	x				x	Transite on skylight above SCT		
4	Tunnels	MJ	T	21	<10%		x	yes	x		Mudded joints on water lines	4	5
5		MJ	T	268	<10%		x	yes	x		Mudded joints on heating	5	5
6	Room 37- boy's RR	MJ	T	2	0		x	yes		x	H2O mudded joints above SCT by sink		
7	Men's Fac. RR now Room 25 Rest room	MJ	T	1	0		x	yes		x	Mudded joint on 6" heat		
7A	Floors-ceramic	MJ	T	9	0		x	yes		x	H2O mudded joints		
8	Girl's Rest room	MJ	T	3							Mudded joints abated		
9	Room 36	MJ	T	1							Mudded joints abated		
10		FT9									Not here		
11	Women's Faculty RR	MJ	T	6			x	yes		x	Mudded joints on water lines		
12		FT9									Floor tiles and adhesive		
											Floor is now ceramic		

# INSPECTION FORM      Independence Community School District

Facility: East Elementary

Address:

Page: 2

Inspector: Thomas E. Haas

MATL. DESC. = Material Description, HOMO UNIT = Homogeneous Unit (HOMO UNIT = A system or part of a system containing ACM as: T = Thermal, S = Surfacing, M = Miscellaneous), Area =Quantity/Count, DAM = Damaged, A = Assumed, S = Sampled, SR = Sample Result, F = Friable, NF = Non Friable, MISC = Miscellaneous, FA =Functional Area where HOMO Units are located, HA = Hazardous Assessment (1 - 7, with 7 being the worst).

NO.	ROOM	MATL. DESC.	HOMO UNIT	AREA	DAM.	A	S	SR	F	NF	MISC	FA	HA
13	Old shower room now Now milk room behind Boy's by kitchen	MJ	T	9	0		x	yes		x	Mudded joints on water lines		
14	Restroom off Boiler room	MJ	T	9	0		x	yes		x	Mudded joint on water lines		
15	Room 28	MJ	T	2	0		x	yes		x	Mudded joints on heating		
16	Room 33 - gym	MJ	T	4	0		x	yes		x	Mudded joints on heating		
17	Room 27	MJ	T	1	0		x	yes		x	Mudded joints on heating		
18	Room 30	MJ	T	6	0		x	yes		x	Mudded joints on heating		
19	Boiler room	FD	MISC	1	0	x				x	Door to boiler room		
20	Room 23	TRP	MISC	20	0	x				x	Transite skylights		
21		FT9"	MISC	170	0		x	Yes		x	Floor tiles and adhesive under carpet- adhesive assumed		
22	Girl's room 36	TRP	MISC	20	0	x				x	Transite skylights- under plywood		
23	Boy's room 37	TRP	MISC	20	0	x				x	Transite skylights- under plywood		



# INSPECTION FORM      Independence Community School District

Facility: East Elementary

Address:

Page: 3

Inspector: Thomas E. Haas

MATL. DESC. = Material Description, HOMO UNIT = Homogeneous Unit (HOMO UNIT = A system or part of a system containing ACM as: T = Thermal, S = Surfacing, M = Miscellaneous), Area = Quantity/Count, DAM = Damaged, A = Assumed, S = Sampled, SR = Sample Result, F = Friable, NF = Non Friable, MISC = Miscellaneous, FA = Functional Area where HOMO Units are located, HA = Hazardous Assessment (1 - 7, with 7 being the worst).

NO.	ROOM	MATL. DESC.	HOMO UNIT	AREA	DAM.	A	S	SR	F	NF	MISC	FA	HA
24	Room 5	FT9	MISC	572	0		x	yes		x	Floor tiles and adhesive under carpet		
25	Room 8	FT9	MISC	884	0		x	yes		x	Floor tiles and adhesive- part under carpet- tan with brown		
26	Room 9	FT9	MISC	750	0		x	yes		x	Floor tiles and adhesive under carpet Rest room has 12" tan floor tiles		
27	Room 10	FT9	MISC	884	0		x	yes		x	Floor tiles and adhesive under carpet		
28	Room 5A	FT9	MISC	308	0		x	yes		x	Floor tiles and adhesive under carpet		
29	Room 15	FT9	MISC	884	0		x	yes		x	Floor tiles and adhesive under carpet		
30	Room 16	FT9	MISC	884	0		x	yes		x	Floor tiles and adhesive – part under carpet tan with green, yellow and red		
31	Room 18-office complex 46 A	FT9	MISC	444	0		x	Yes		x	Floor tiles and adhesive- part under carpet- 2 offices and storage		
32	Room 25	FT9	MISC	210	0		x	Yes		x	Floor tiles and adhesive under carpet		
	24 -32										All ADHESIVE ASSUMED		

# INSPECTION FORM      Independence Community School District

Facility East Elementary

Address:

Page: 4

Inspector: Thomas E. Haas

MATL. DESC. = Material Description, HOMO UNIT = Homogeneous Unit (HOMO UNIT = A system or part of a system containing ACM as: T = Thermal, S = Surfacing, M = Miscellaneous), Area = Quantity/Count, DAM = Damaged, A = Assumed, S = Sampled, SR = Sample Result, F = Friable, NF = Non Friable, MISC = Miscellaneous, FA = Functional Area where HOMO Units are located, HA = Hazardous Assessment (1 - 7, with 7 being the worst).

NO.	ROOM	MATL. DESC.	HOMO UNIT	AREA	DAM.	A	S	SR	F	NF	MISC	FA	HA
33	Room 26-Faculty RRs	FT9	MISC	302	0		X	yes		X	Floor tiles and adhesive- tan with black		
34	Room 27	FT9	MISC	70	0		X	yes		X	Floor tiles and adhesive under carpet		
35	Room 28	FT9	MISC	180	0		X	yes		X	Floor tiles and adhesive under carpet		
36	Men's in boiler room	FT9	MISC	42	0		X	yes		X	New floor tiles 12 and adhesive- old may be under new		
37	34-Restroom/ entrance	FT9	MISC	608	0		X	yes		X	Floor tiles and adhesive		
38	Room 33 and storage	FT9	MISC	309	0		X	yes		X	New floor tiles 12 and adhesive- old may be under new		
39	Room 32	FT9	MISC	85	0		X	yes		X	New floor tiles 12 and adhesive- old may be under new		
40	Room 30	FT9	MISC	500	0		X	yes		X	Floor tiles and adhesive		
41	Room 40 several rooms	FT9	MISC	680	0		X	yes		X	Floor tiles and adhesive under carpet		
42	New south hall	FT9	MISC	238	0		X	yes		x	Floor tiles 12 and adhesive over old floor tiles and adhesive		
	33-42										All ADHESIVE ASSUMED		



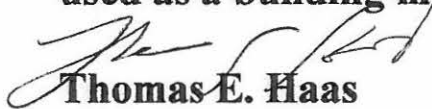
[illegible]

**Independence Community School District  
East Elementary**

**Storage shed-SE of East Elementary  
40' x 60' Metal- Beige and white**

**Asbestos Letter of Exclusion**

**As an asbestos inspector, I state that the above buildings were built after October 12, 1988 No Asbestos Containing Building Materials was specified as a building material in any construction document for the building and to the best of my knowledge no Asbestos Containing Building Materials was used as a building material in the building.**



**Thomas E. Haas**

**Asbestos Inspector/ Management Planner  
12-8768 I and 12-9022 MP**

West Elementary School  
Independence Community  
School District

## **THREE YEAR REINSPECTION**

LOCAL EDUCATION AGENCY: Independence Community School District

FACILITY/BUILDING SITE: West Elementary School

INSPECTOR/MANAGEMENT PLANNER: Thomas E. Haas

REINSPECTION DATE: May 24 - 30, 2012

REASSESSMENT DATE: May 24 – 30, 2012

In accordance with the requirements of the Asbestos Hazard Emergency Response Act (AHERA), asbestos containing building materials and suspected asbestos containing building materials that were identified during the initial inspection have been reinspected, reassessed, and appropriate response actions have been determined.

The existing management plan has been updated to reflect any changes.

Note(s): West Elementary was the former Middle School

1. Refer to prior Re inspections for additional information.

[illegible]

[illegible]

NO.	ROOM	MATL. DESC.	HOMO UNIT	AREA	DAM.	A	S	SR	F	NF	MISC	FA	HA
24	Gym	MJ	TSI	14	0		x	yes		x	Mudded joints on roof drains		
25	Room S 9	SCT	MISC	8	0		x	yes	x		Suspended ceiling tiles – lots of holes	25	4
26	North gym entrance	SCT	MISC	84	0		x	yes	x		Suspended ceiling tiles- lots of holes	26	4
27	South gym entrance	SCT	MISC	92	0		x	yes	x		Suspended ceiling tiles- lots of holes	27	4
28	Janitor	MJ	TSI	1			x	yes			Mudded joint on roof drain		
29	General storage Tool room by boiler	MJ	TSI	1	0		x	yes		x	Mudded joint on roof drain above ceiling		
30	Pipe chase – north wing	MJ	TSI	4	0		x	yes		x	Mudded joints on roof drains		
30A	between rest rooms	MJ	TSI	10	0		x	yes		x	Mudded joints on water lines		
31	Common	MJ	TSI	8	?		x	yes			Mudded joints on roof drains above SCT Did not check- tiles contain asbestos		
31A		SCT	MISC	2624	0		x	yes	x		Suspended ceiling tiles- lots of dots	31A	4



# INSPECTION FORM

Facility: Independence Community School

Address: West Elementary

Page: 4

**MATL. DESC.** = Material Description, **HOMO UNIT** = Homogeneous Unit (HOMO UNIT = A system or part of a system containing ACM as: T = Thermal, S = Surfacing, M = Miscellaneous), **Area** = Quantity/Count, **DAM** = % Damaged, **A** = Assumed, **S** = Sampled, **SR** = Sample Result, **F** = Friable, **NF** = Non-Friable, **MISC** = Miscellaneous, **FA** = Functional Area where HOMO Units are located, **HA** = Hazardous Assessment (1 - 7, with 7 being the worst).

NO.	ROOM	MATL. DESC.	HOMO UNIT	AREA	DAM.	A	S	SR	F	NF	MISC	FA	HA
32	Janitor off common	MJ	TSI	2	0		x	yes		x	Mudded joints on heating lines		
33		SCT	MISC	128	0		x	yes	x		Suspended ceiling tiles- lots of dots	33	4
34		MJ	TSI	7	<10%		x	yes	x		Mudded joints on roof drains	34	4
35	PE-Wrestling storage	MJ	TSI	1	0		x	yes		x	Mudded joint on roof drain		
36	Vocal Music	MJ	TSI	1	0		x	yes		x	Mudded joint on roof drain		
37-39	Old Home EC. Complex	SCT	MISC								New SCT		
40	Food storage	SCT	MISC	280	0		x	yes	x		Suspended ceiling tiles -- lots of dots	40	4
41	Office complex SEC	SCT	MISC	400	0		x	yes	x		Suspended ceiling tiles- lots of dots	41	4
42		MD	MISC	1	0	x					Vault door		
43	Principal /VP	SCT	MISC	200	0		x	yes	x		Suspended ceiling tiles- lots of dots	43	4
44	Office hall	SCT	MISC	214	0	x			x		Suspended ceiling tiles- new	44	4

**INSPECTION FORM**      **Independence Community School District**

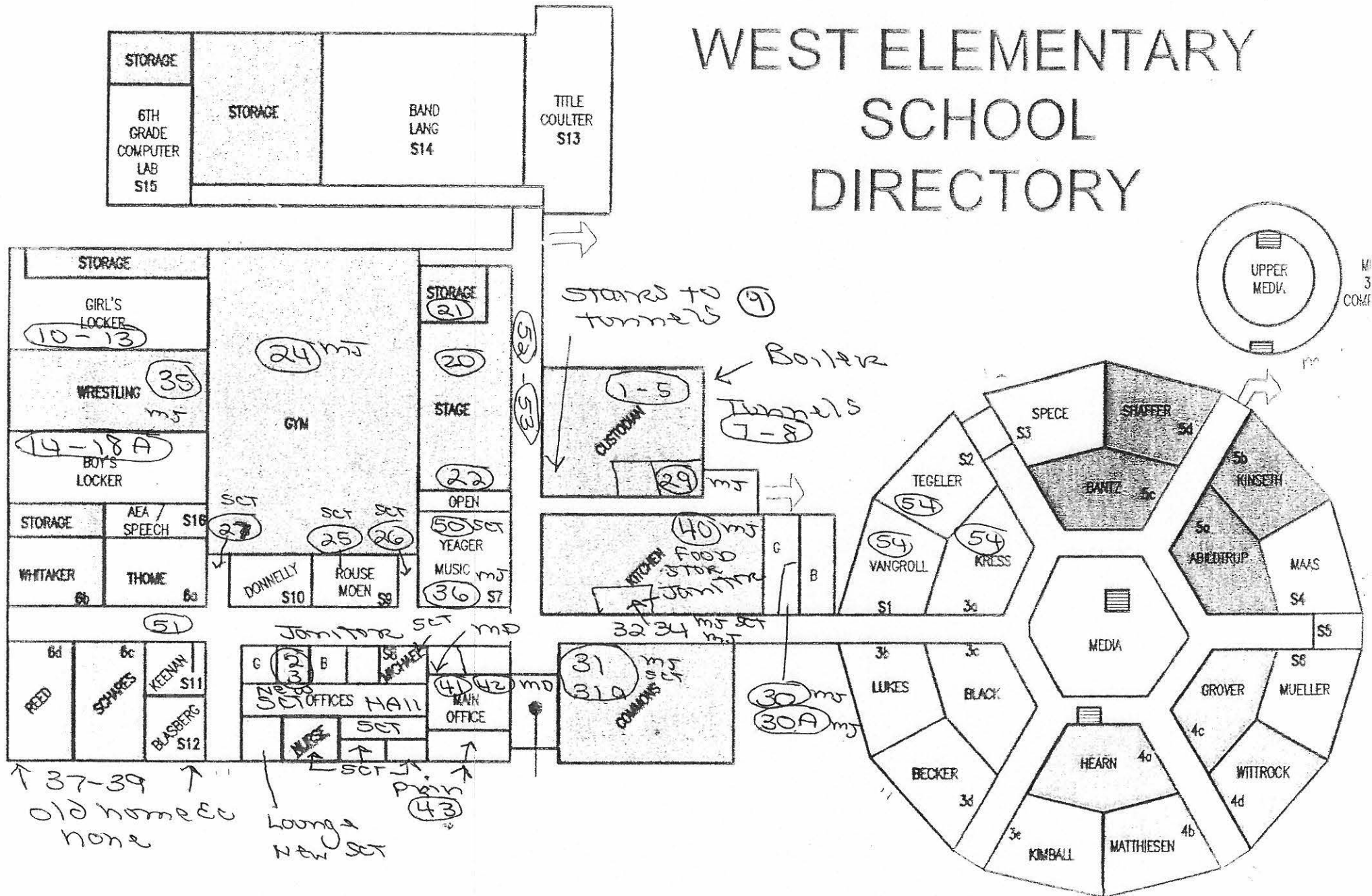
Address:

Inspector: Thomas E. Haas

MATL. DESC. = Material Description, HOMO UNIT = Homogeneous Unit (HOMO UNIT = A system or part of a system containing ACM as: T = Thermal, S = Surfacing, M = Miscellaneous), Area = Quantity/Count, DAM = Damaged, A = Assumed, S = Sampled, SR = Sample Result, F = Friable, NF = Non Friable, MISC = Miscellaneous, FA = Functional Area where HOMO Units are located, HA = Hazardous Assessment (1 - 7, with 7 being the worst).

NO.	ROOM	MATL. DESC.	HOMO UNIT	AREA	DAM.	A	S	SR	F	NF	MISC	FA	H A
45	Teacher's workroom	SCT	MISC	214	0		x	yes	x		Suspended ceiling tiles- lots of dots	45	4
46	Conference room	SCT	MISC	576	0		x	yes	x		Suspended ceiling tiles- lots of dots	46	4
47	Nurses room	SCT	MISC	445	0		x	yes	x		Suspended ceiling tiles- lots of dots	47	4
48	Teacher lounge	SCT	MISC	392	0	x					Suspended ceiling tiles- l Different tiles	48	4
49	Janitor closet off of hall	SCT	MISC	90	0		x	yes	x		Suspended ceiling tiles – lots od dots	49	4
50	Vocal music storage	SCT	MISC	24	0		x	yes	x		Suspended ceiling tiles- lots of holes	50	4
51	N-S hall Entry(east)	SCT	MISC	3000	0		x	yes	x		Suspended ceiling tiles- lots of holes	51	4
52	East – West hall	SCT	MISC	1180	0		x	yes	x		Suspended ceiling tiles- lots of holes	52	4
53		FT12	MISC	700	<3%	x				x	Floor tiles 12" and adhesive		
54	Si, S2, 3A	CT/TT	MISC	All	0	x				x	Black table and counter tops		

# ST ELEMENTARY SCHOOL DIRECTORY



# Miscellaneous Locations

## Independence Community School District

## **THREE YEAR REINSPECTION**

**LOCAL EDUCATION AGENCY:** Independence Community School District

**FACILITY/BUILDING SITE:** Miscellaneous Locations

**INSPECTOR/MANAGEMENT PLANNER:** Thomas E. Haas

**REINSPECTION DATE:** May 24, 2012 – May 30, 2012

**REASSESSMENT DATE:** March 24, 2012 – May 24, 2012

In accordance with the requirements of the Asbestos Hazard Emergency Response Act (AHERA), asbestos containing building materials and suspected asbestos containing building materials that were identified during the initial inspection have been reinspected, reassessed, and appropriate response actions have been determined.

The existing management plan has been updated to reflect any changes.

Note(s): Refer to prior Re inspections for additional information.

# INSPECTION FORM      Independence Community School District

Facility: Misc. Locations

Address:

Page: 1

Inspector: Thomas E. Haas

MATL. DESC. = Material Description, HOMO UNIT = Homogeneous Unit HOMO UNIT = A system or part of a system containing ACM as: T = Thermal, S = Surfacing, M = Miscellaneous), Area =Quantity/Count, DAM = Damaged, A = Assumed, S = Sampled, SR = Sample Result, F = Friable, NF = Non Friable, MISC = Miscellaneous, FA = Functional Area where HOMO Units are located, HA = Hazardous Assessment (1 - 7, with 7 being the worst).

NO.	ROOM	MATL. DESC.	HOMO UNIT	AREA	DAM.	A	S	SR	F	NF	MISC	FA	HA
1	Administration bldg. 1207 1 <sup>st</sup> Street West Independence Iowa										No material listed on prior inspection		
	Bus barn by high school	MAC	MISC	2	0	x				x	2 metal asbestos chimneys- rear section built after 1988-letter enclosed		
		Shed									None- portable wood shed inside fence 8 x 12		
2	Soccer field by high school	Lean to									None 20 x 20 lean to -white metal inside fence		
	2 Story Broadcast/storage	exempt									Built after 1988 exempt		
	Old restrooms	NONE									North end of old football field		
	Old dug outs (s)	NONE									Old dug outs (concrete) by high school- old baseball field		
	New Football Field	Exempt									Built after 1988		
	Locker room	Exempt									Built after 1988		
	Concession/RR/ storage	Exempt									Built after 1988		
	2 story press box	Exempt									Built after 1988		
	South football field	Exempt									Built after 1988		
	Concession stand												
	24 x 24 garage-storage	None									SE side of football field		

**Independence Community School District  
Soccer Field by Old high school**

**Two story broadcast booth and storage**

**Asbestos Letter of Exclusion**

**As an asbestos inspector, I state that the above buildings were built after October 12, 1988. No Asbestos Containing Building Materials was specified as a building material in any construction document for the building and to the best of my knowledge no Asbestos Containing Building Materials was used as a building material in the building.**



**Thomas E. Haas**

**Asbestos Inspector/ Management Planner  
12-8768 I and 12-9022 MP**

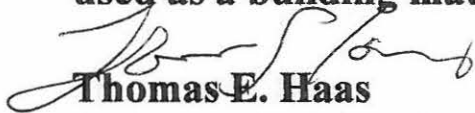


**Independence Community School District  
New Football Field**

- A. Locker rooms**
- B. Concession stand – restrooms - storage**
- C. Two story Press box and storage**
- D. Concession stand- south side**

**Asbestos Letter of Exclusion**

**As an asbestos inspector, I state that the above buildings were built after October 12, 1988 No Asbestos Containing Building Materials was specified as a building material in any construction document for the building and to the best of my knowledge no Asbestos Containing Building Materials was used as a building material in the building.**

  
**Thomas E. Haas**

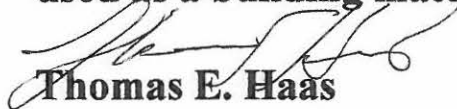
**Asbestos Inspector/ Management Planner  
12-8768 I and 12-9022 MP**

**Independence Community School District  
Old High school**

**Addition to Bus Barn**

**Asbestos Letter of Exclusion**

**As an asbestos inspector, I state that the above buildings were built after October 12, 1988 No Asbestos Containing Building Materials was specified as a building material in any construction document for the building and to the best of my knowledge no Asbestos Containing Building Materials was used as a building material in the building.**



**Thomas E. Haas**

**Asbestos Inspector/ Management Planner  
12-8768 I and 12-9022 MP**